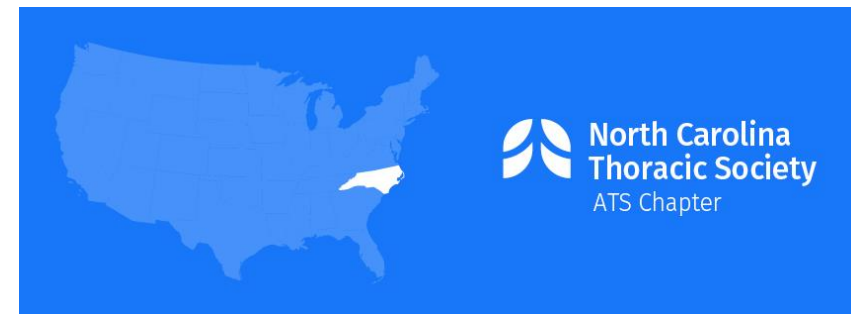
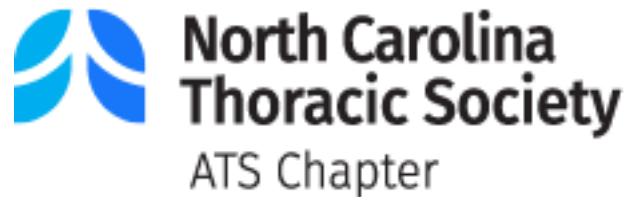


# The North Carolina Lung Health Report

Prepared by the North Carolina Thoracic Society  
2022



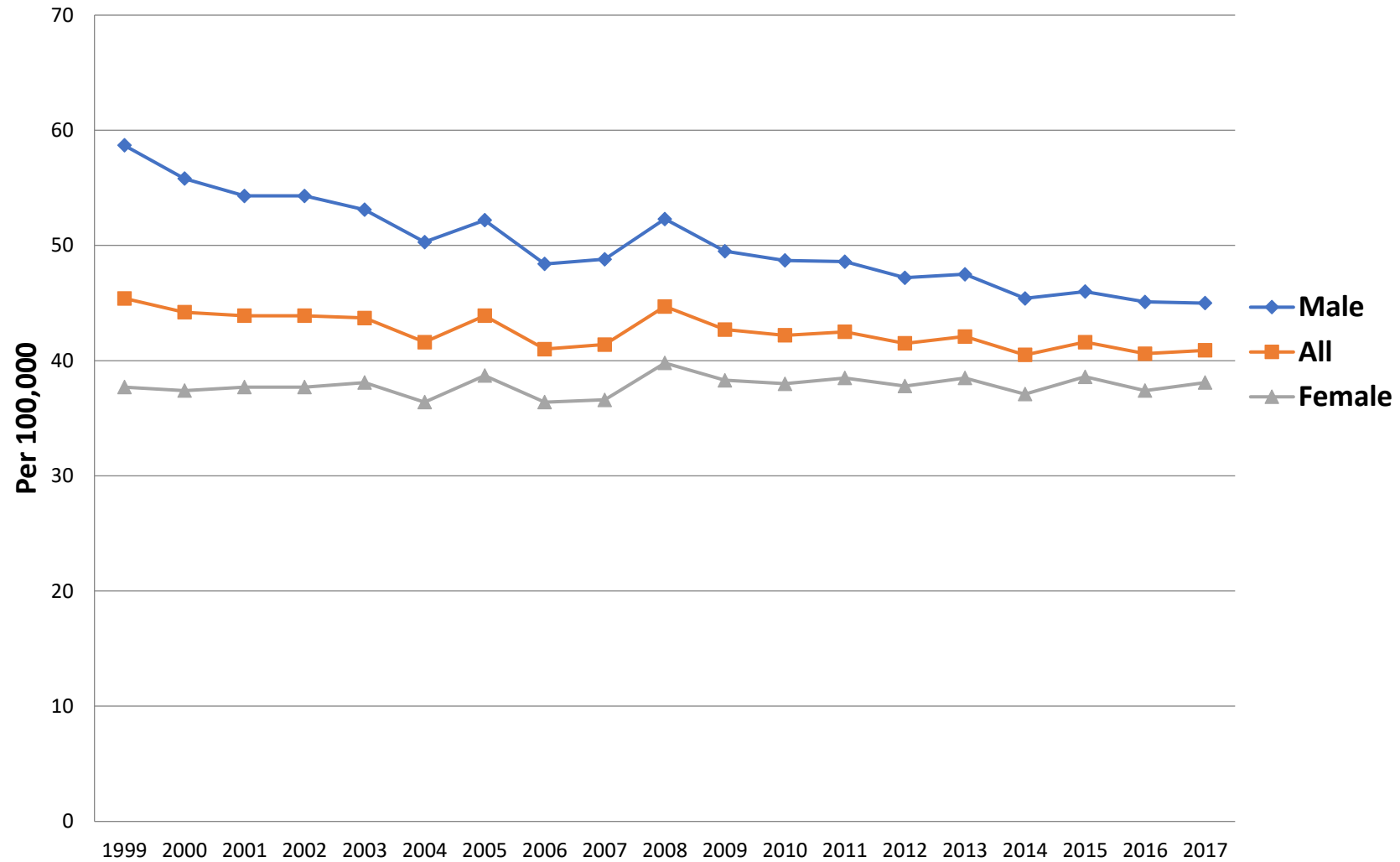
# Background

- The following information was assimilated from various data sources including the USA and North Carolina Behavioral Risk Factor Surveillance System (BRFSS) health surveys and the CDC Wonder database (mortality)
- This only includes data on adults (>18 years-old)
- The state maps are based on the Area Health Education Centers (AHECs)

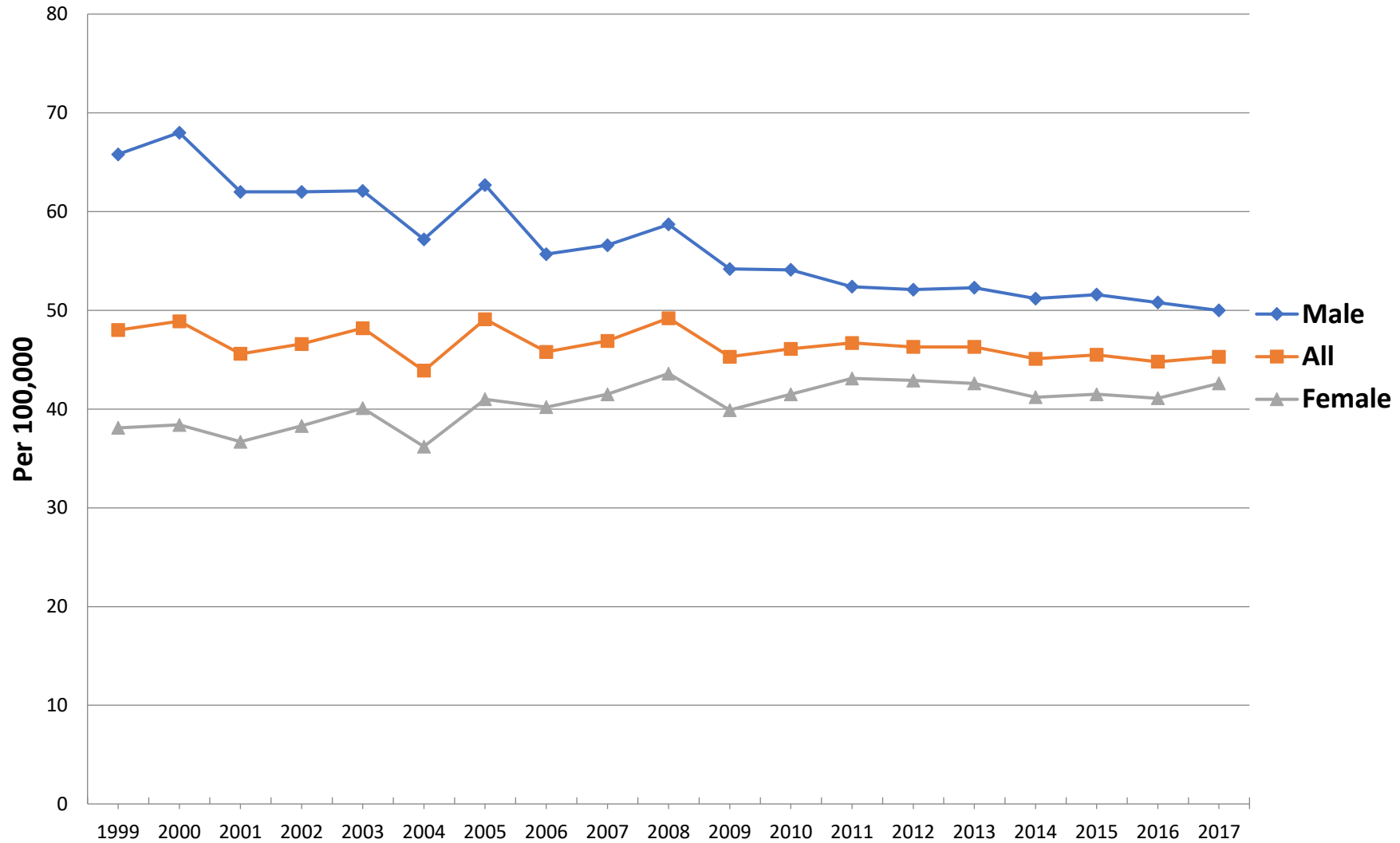
# Mortality Data – Chronic Lower Respiratory Tract Diseases (USA and NC)

Note: >95% of deaths due to COPD

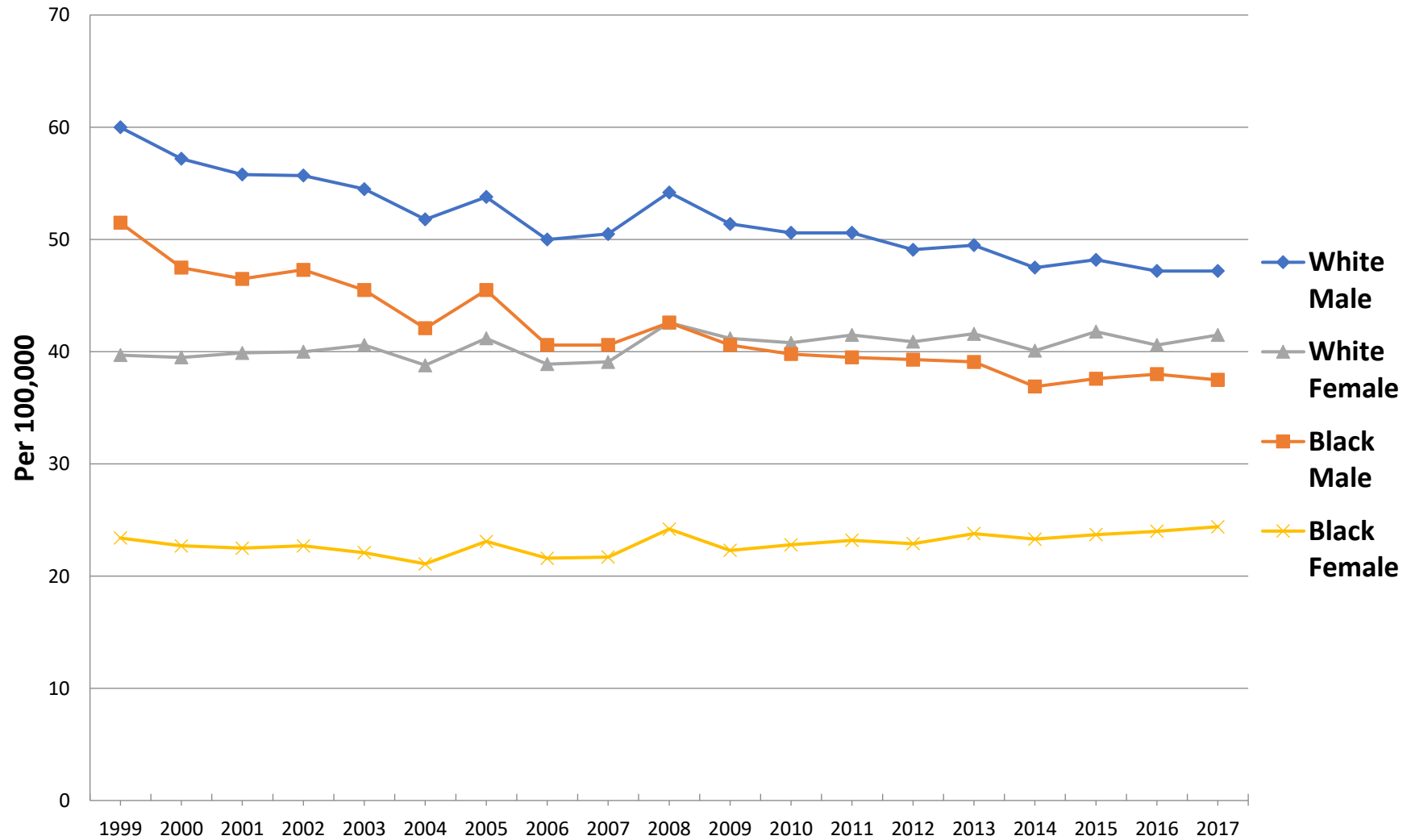
# 1999-2017 US Chronic Lower Respiratory Diseases Mortality Rate by Sex (Age Adjusted US Std. population)



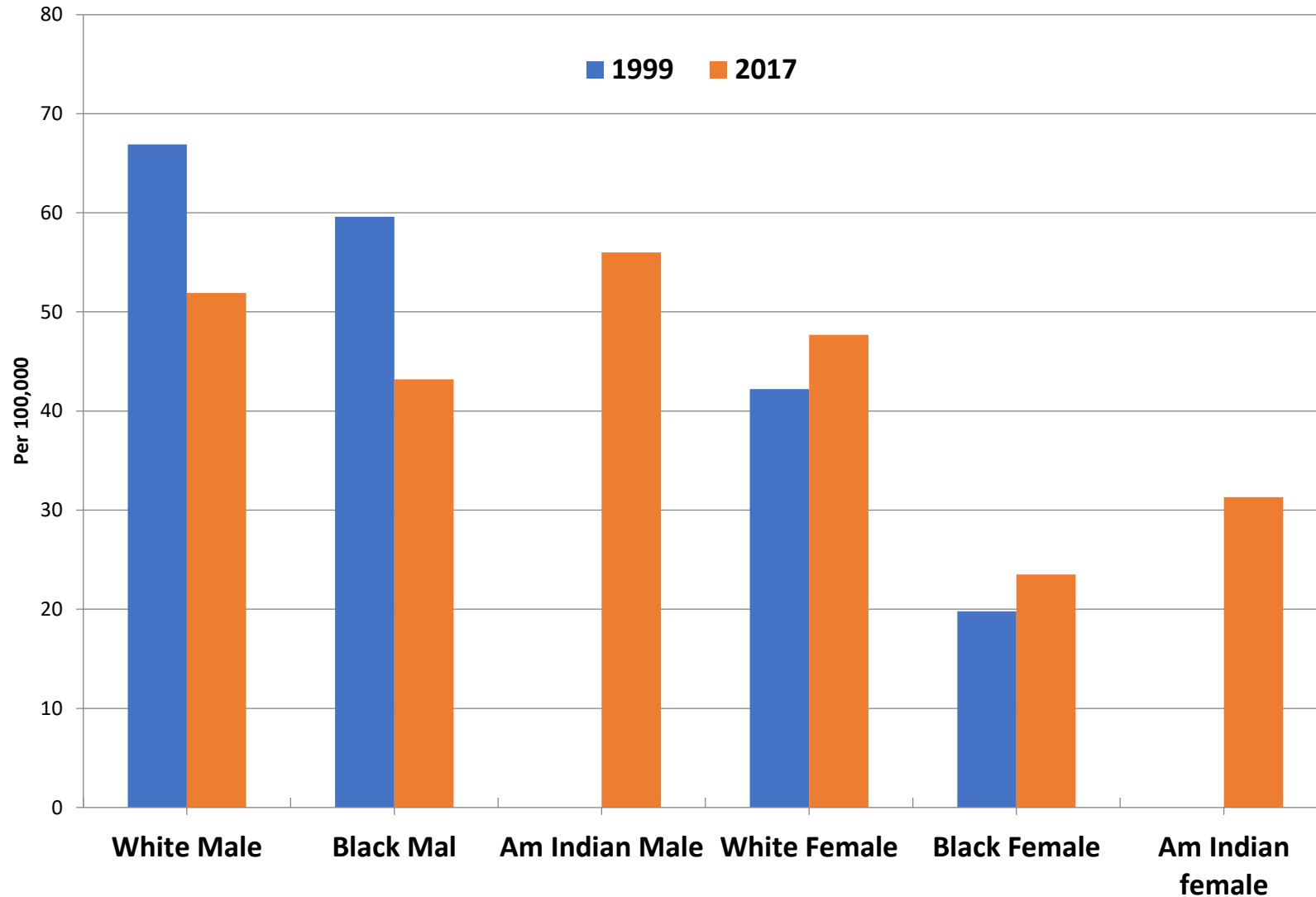
# 1999-2017 **NC** Chronic Lower Respiratory Diseases Mortality Rate by Sex (Age Adjusted US Std. population)



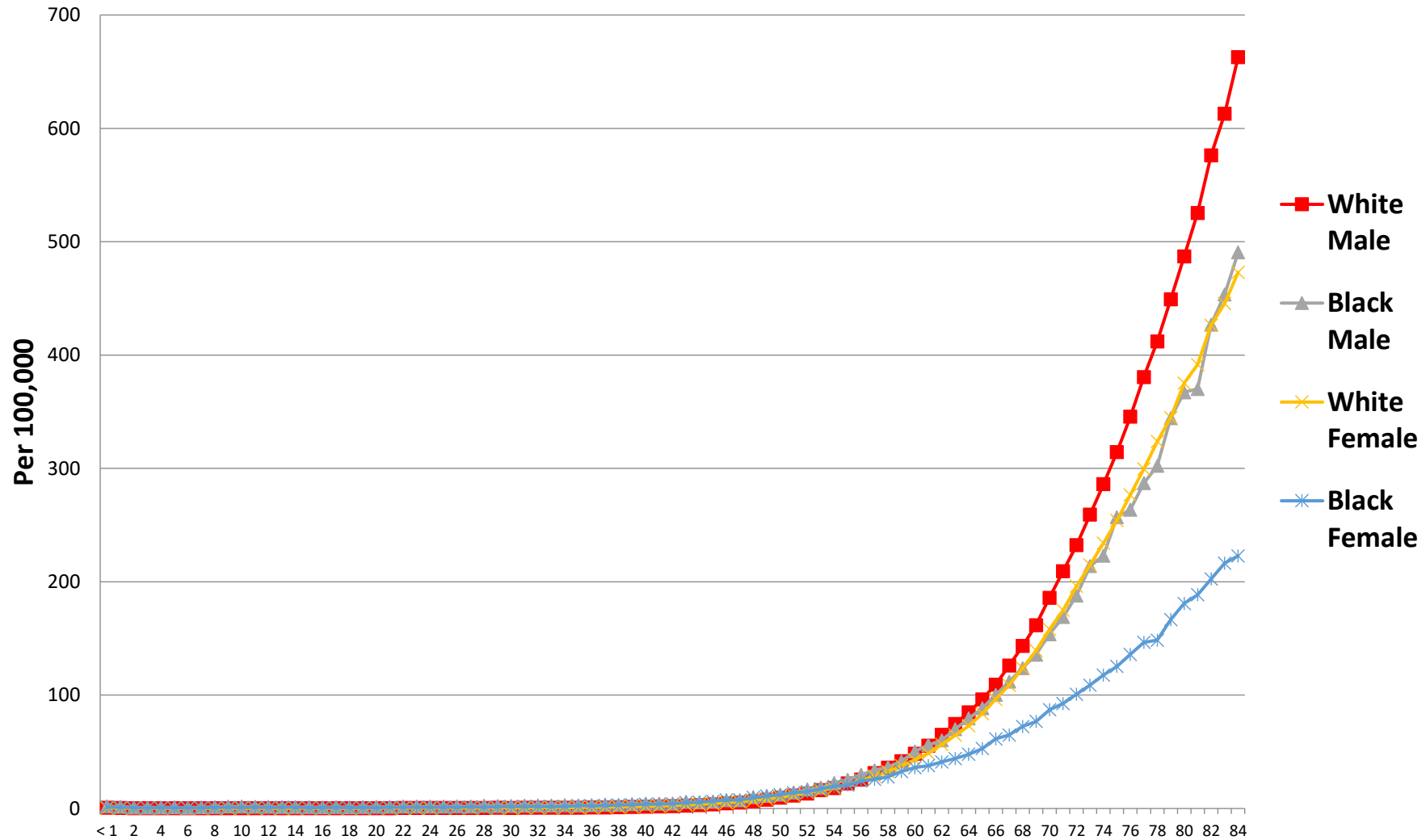
# 1999-2017 US Chronic Lower Respiratory Diseases Mortality Rate by Race & Sex (Age Adjusted US Std. population)



# 1999 & 2017 **NC** Chronic Lower Respiratory Diseases Mortality by Race & Sex (Age Adjusted Rate US Std. population)

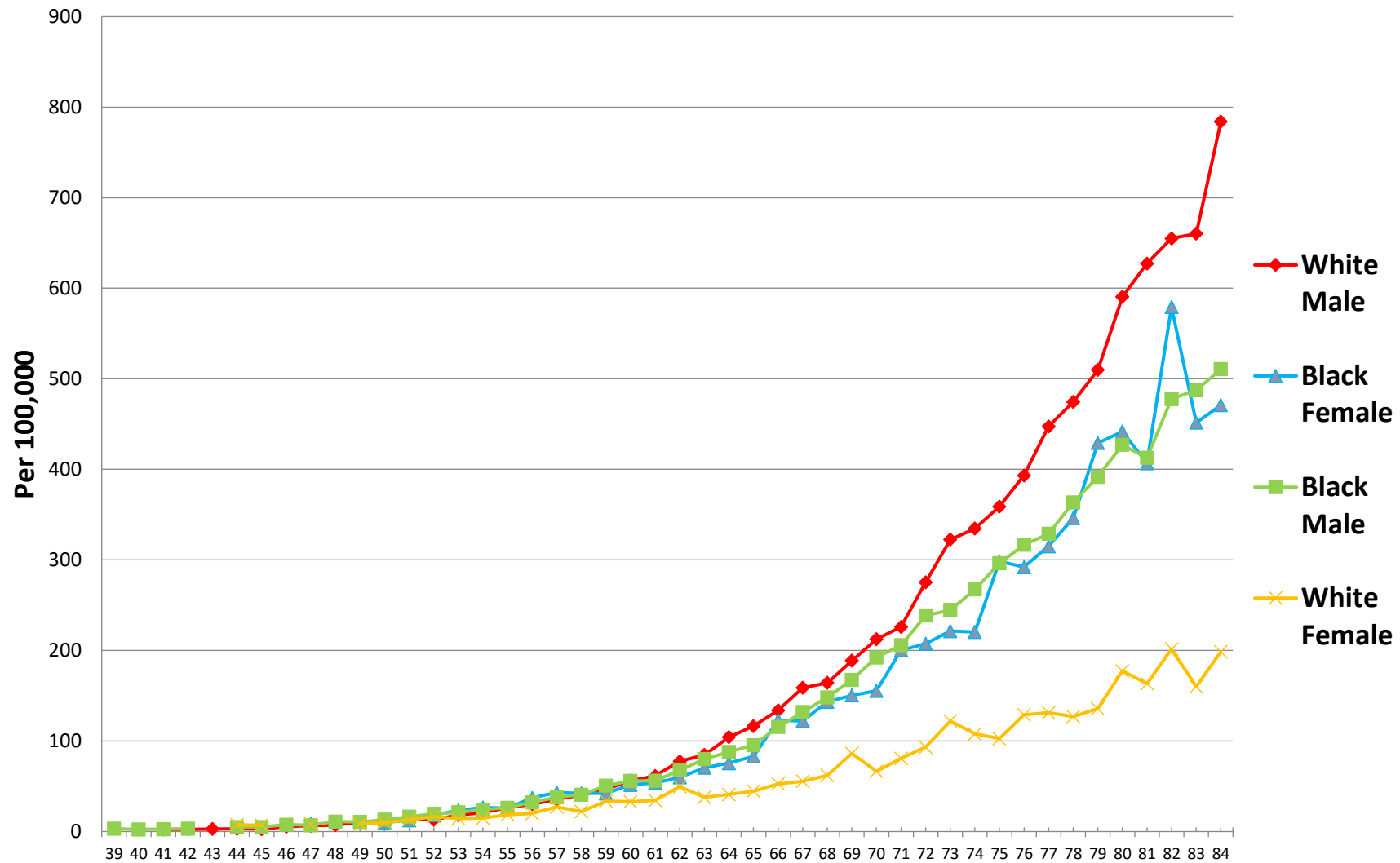


# 1999-2017 US Chronic Lower Respiratory Diseases Mortality Rate by Age, Race & Sex (Crude Rate per 100,000 population)

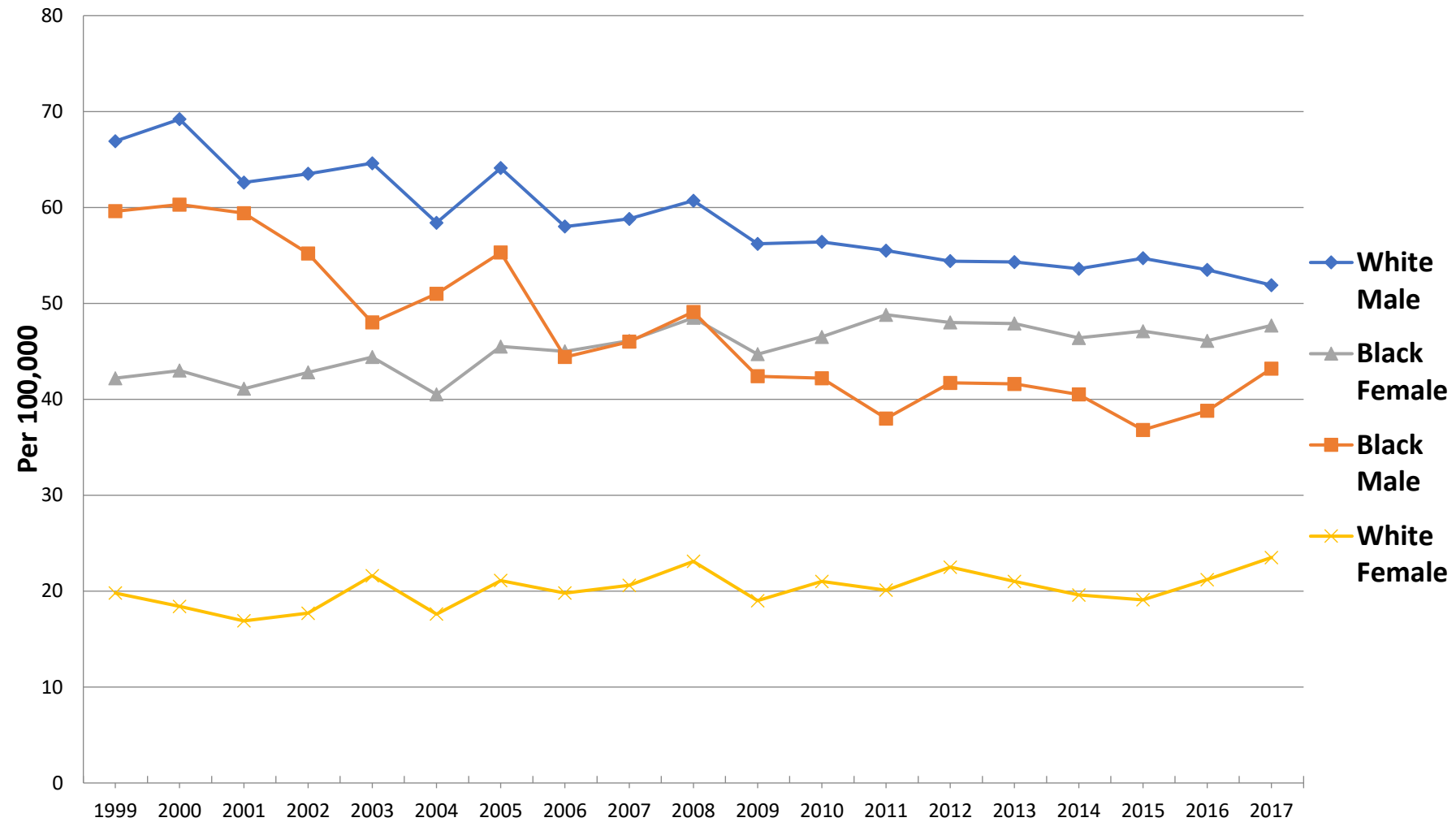




# 1999-2017 NC Chronic Lower Respiratory Diseases Mortality Rate By Age, Race & Sex (Crude Rate per 100,000 population)

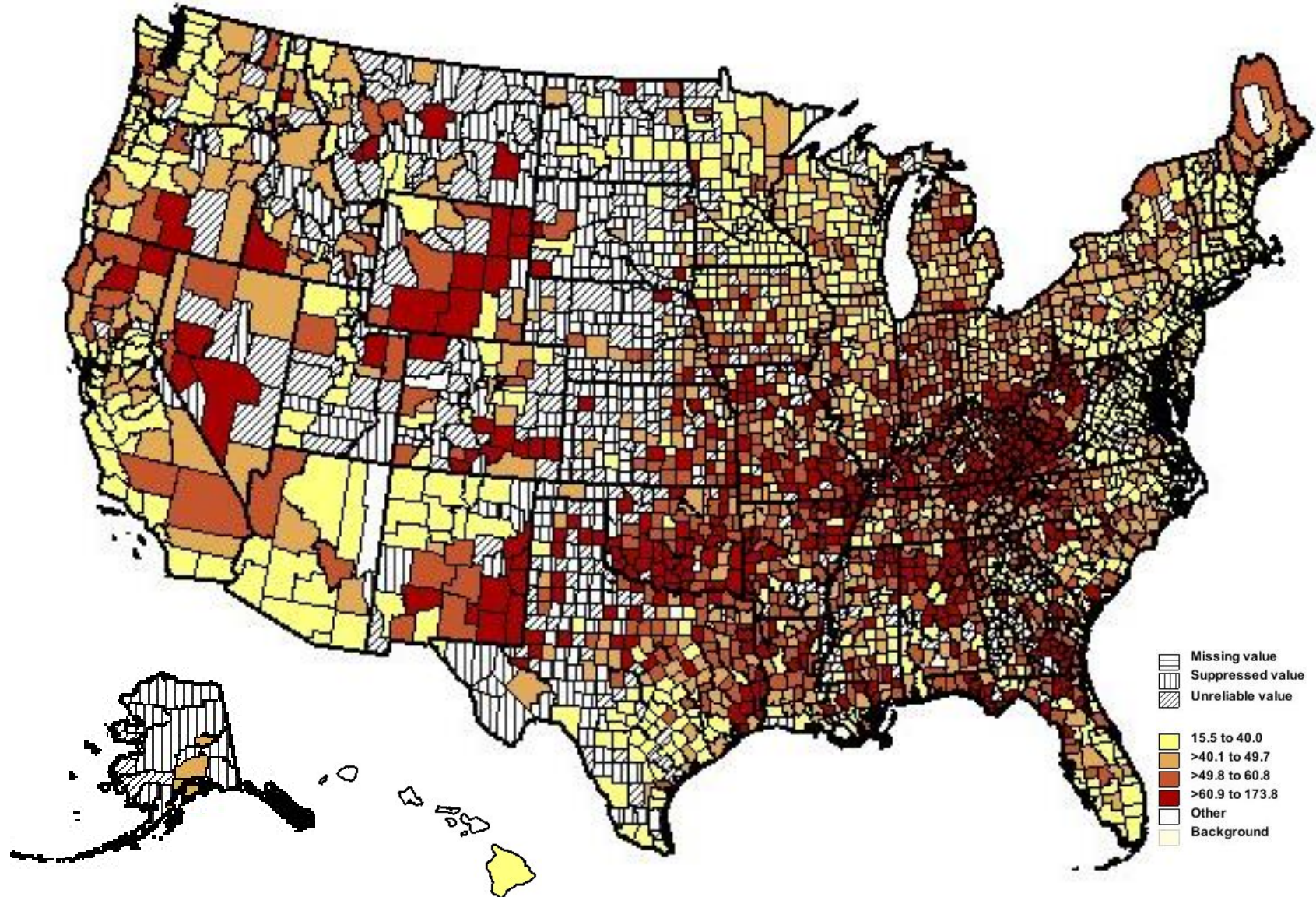


# 1999-2017 **NC** Chronic Lower Respiratory Diseases Mortality Rate by Race & Sex (Age Adjusted US Std. population)



# Asthma and COPD

# COPD Mortality Rates\* by County Three Year Average (2012-2014)

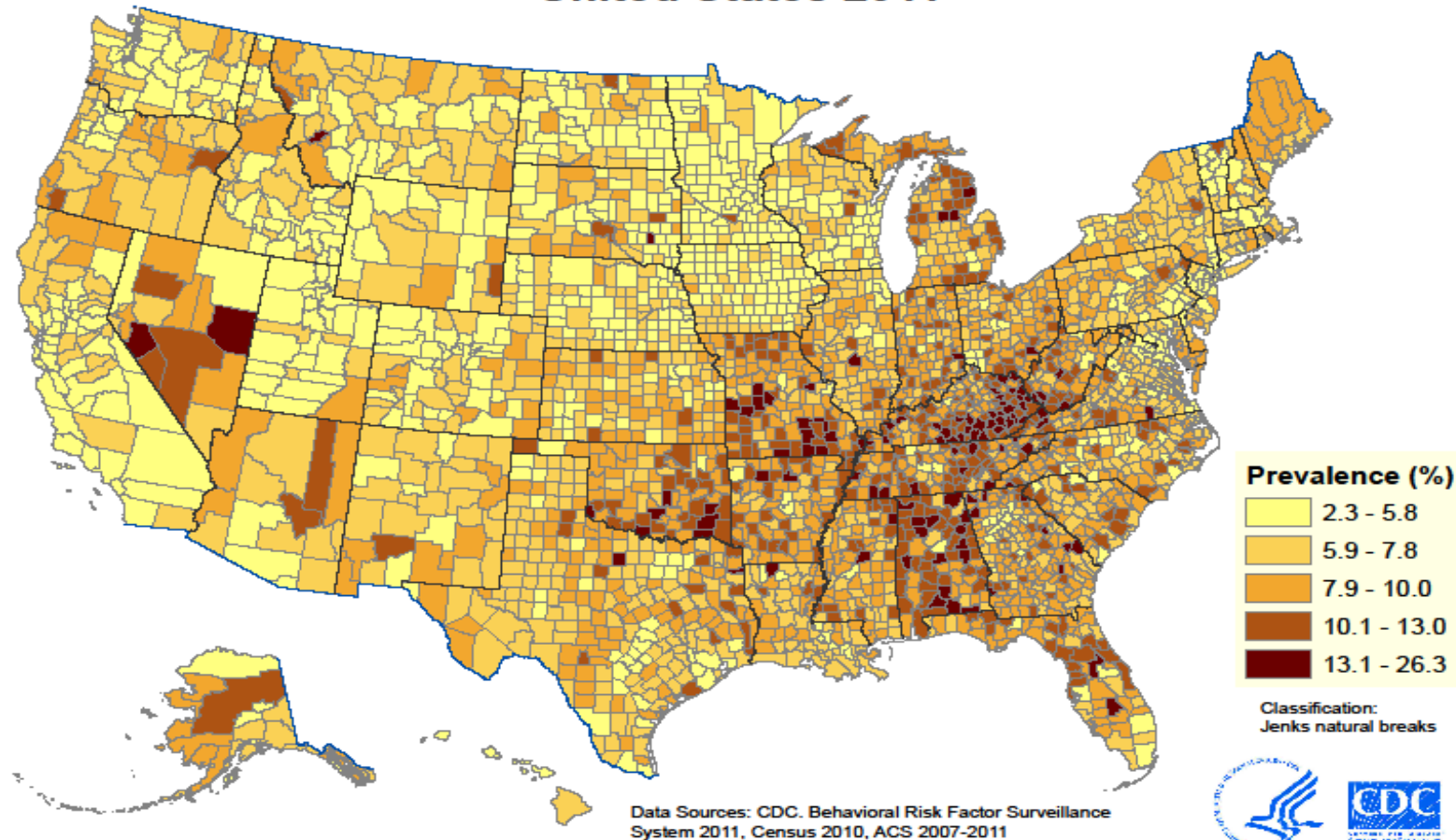


\*Age-adjusted rate (per 100,000) to year 2000 US Standard population

Source: CDC WONDER Online Database

# National COPD Prevalence Using BRFSS

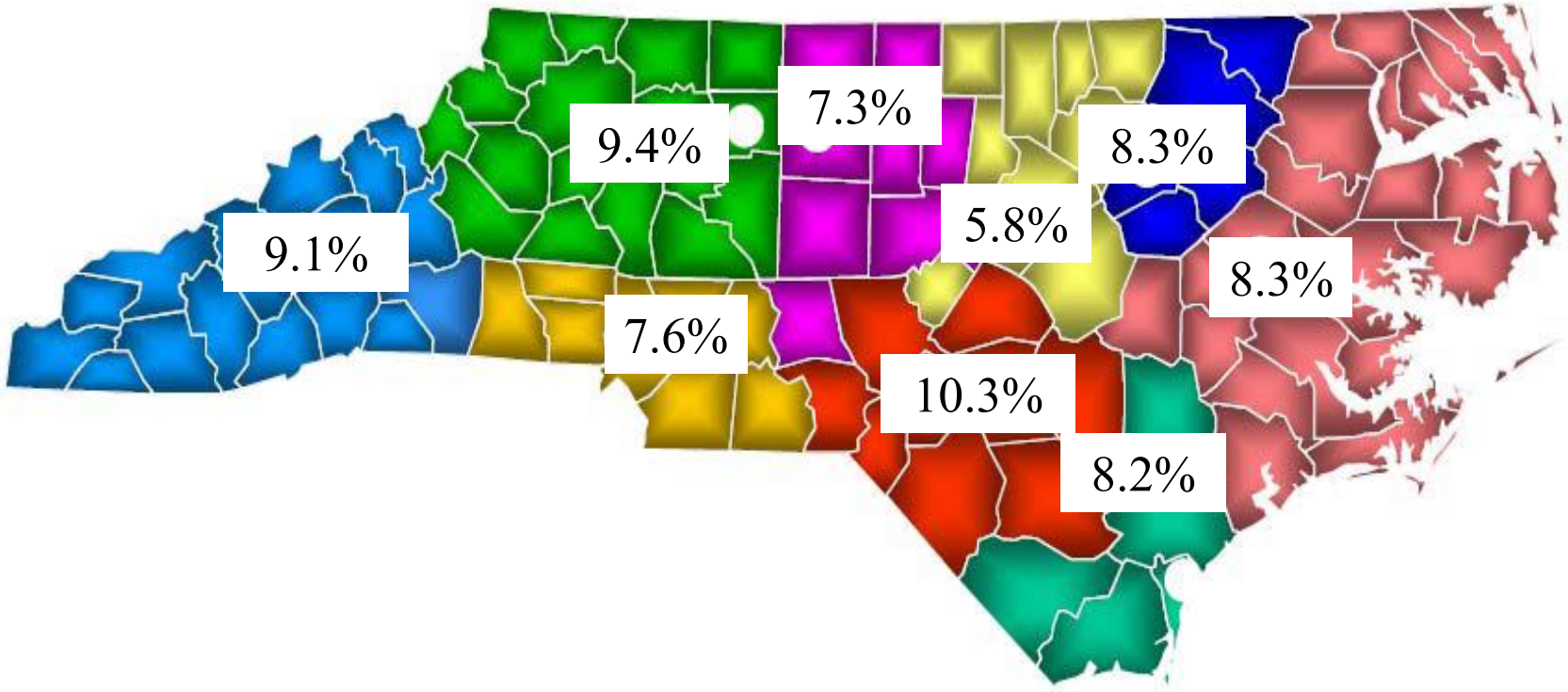
**Model-based COPD Prevalence by County,  
United States 2011**





# Prevalence of Self-reported COPD Among Adults by AHEC Region (NC BRFSS 2018)

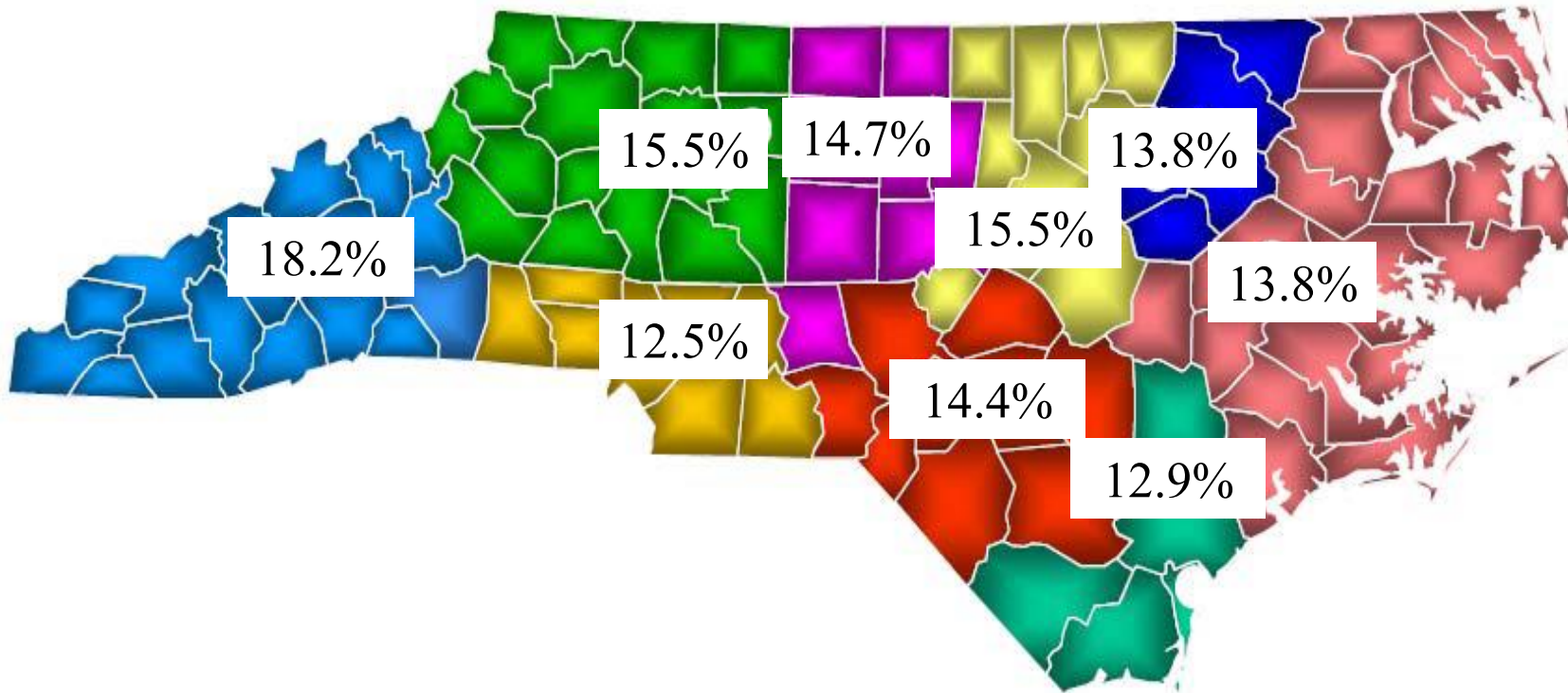
Statewide: 8.1% of Adults Reported COPD



Eastern and Area L AHEC data are combined

# Prevalence of Self-reported Ever Asthma Among Adults by AHEC Region (NC BRFSS 2018)

Statewide: 14.5% of Adults Reported Ever Asthma

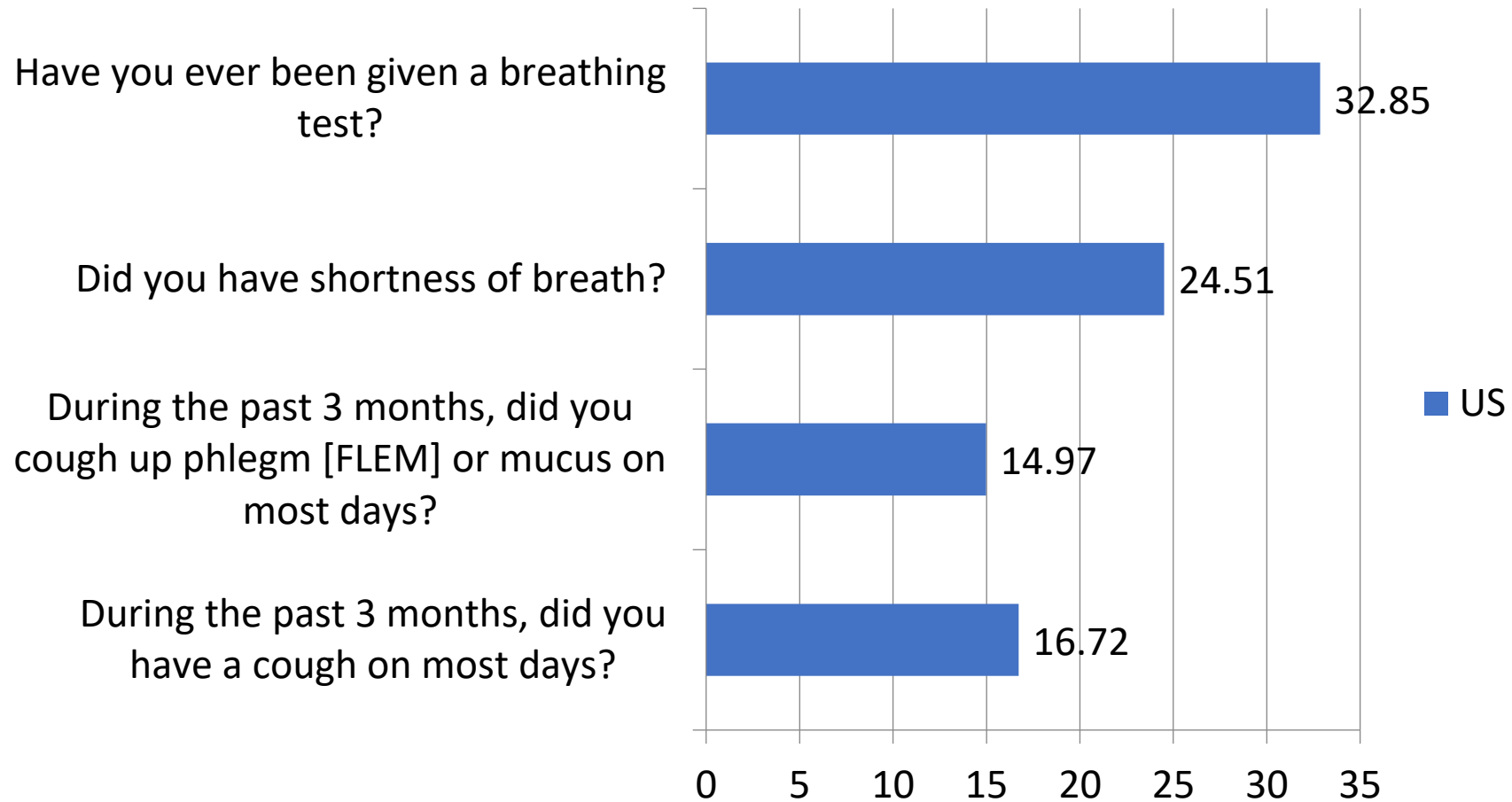


Eastern and Area L AHEC data are combined

# Respiratory Symptoms

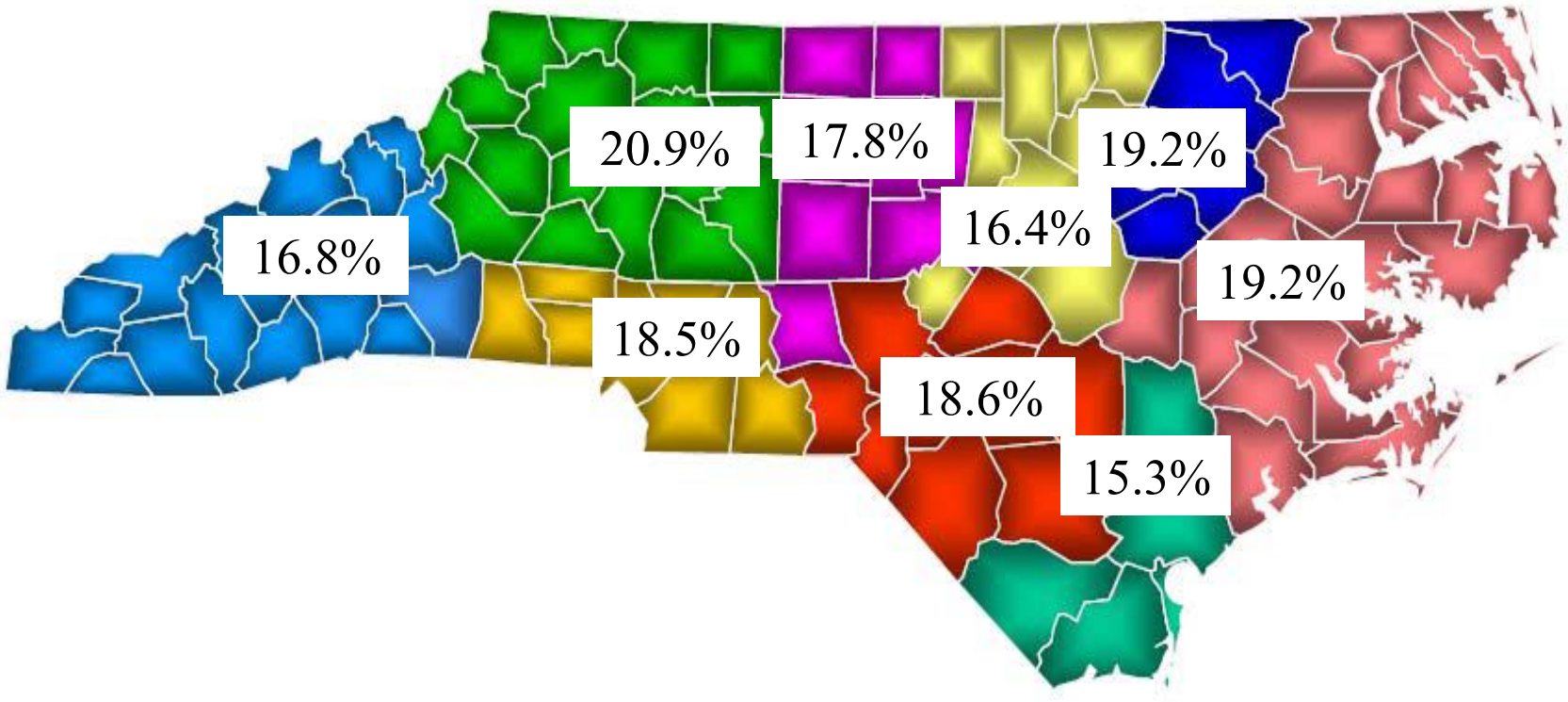


# Respiratory Health - USA Data Using BRFSS in 2018



# Prevalence of Self-reported Cough on Most Days in Last 3 Months Among Adults (2018 NC BRFSS by AHEC Region)

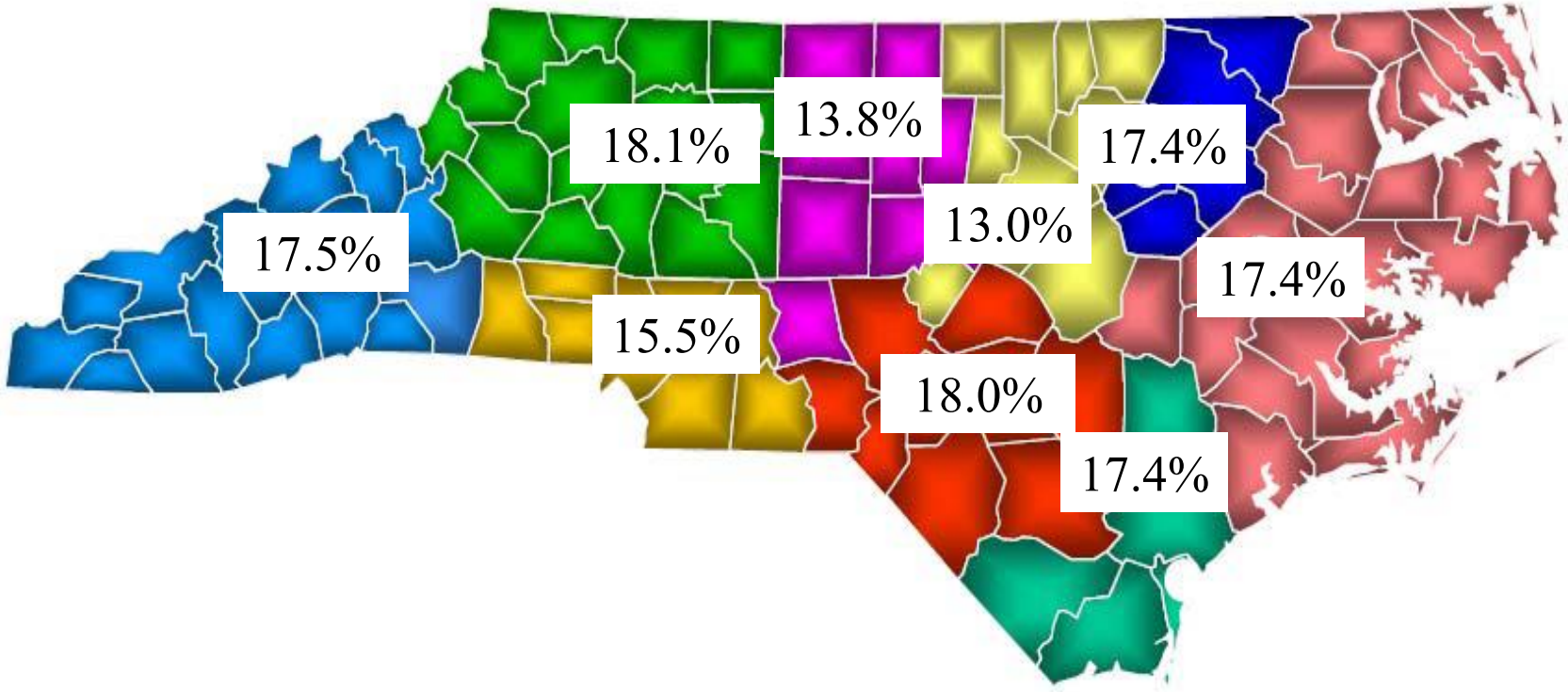
Statewide: 18.4% of Adults Reported Cough on Most Days in Last 3 Months



Eastern and Area L AHEC data are combined

Prevalence of Self-reported Cough Up Phlegm Among Adults on Most Days in Last 3 Months (2018 NC BRFSS by AHEC Region)

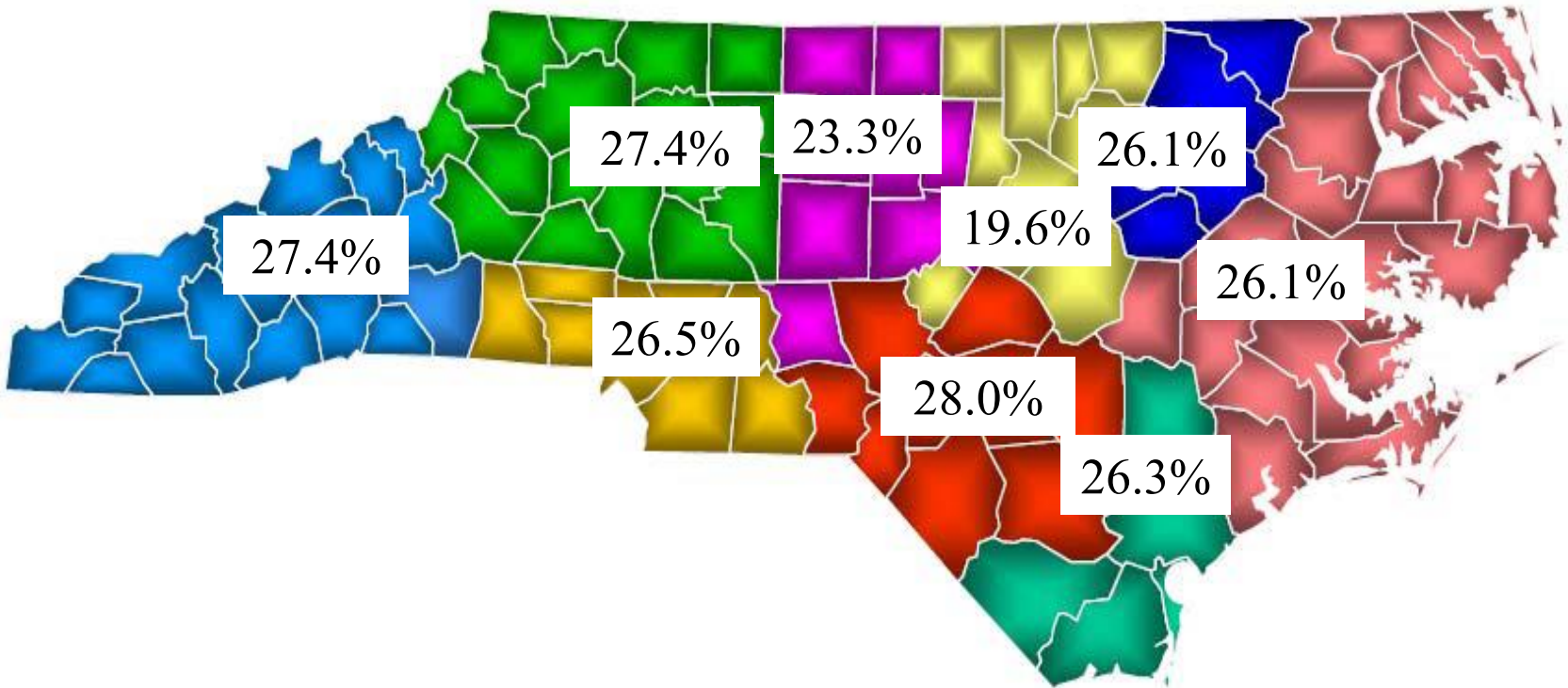
Statewide: 16.1% of Adults Reported Coughing up Phlegm Most Days in Last 3 Months



Eastern and Area L AHEC data are combined

# Prevalence of Self-reported Shortness of Breath Hurrying on the Level or Walking Up Stairs Among Adults (2018 NC BRFSS by AHEC Region)

Statewide: 25.4% of Adults Reported Shortness of Breath Hurrying Walking or Climbing Stairs

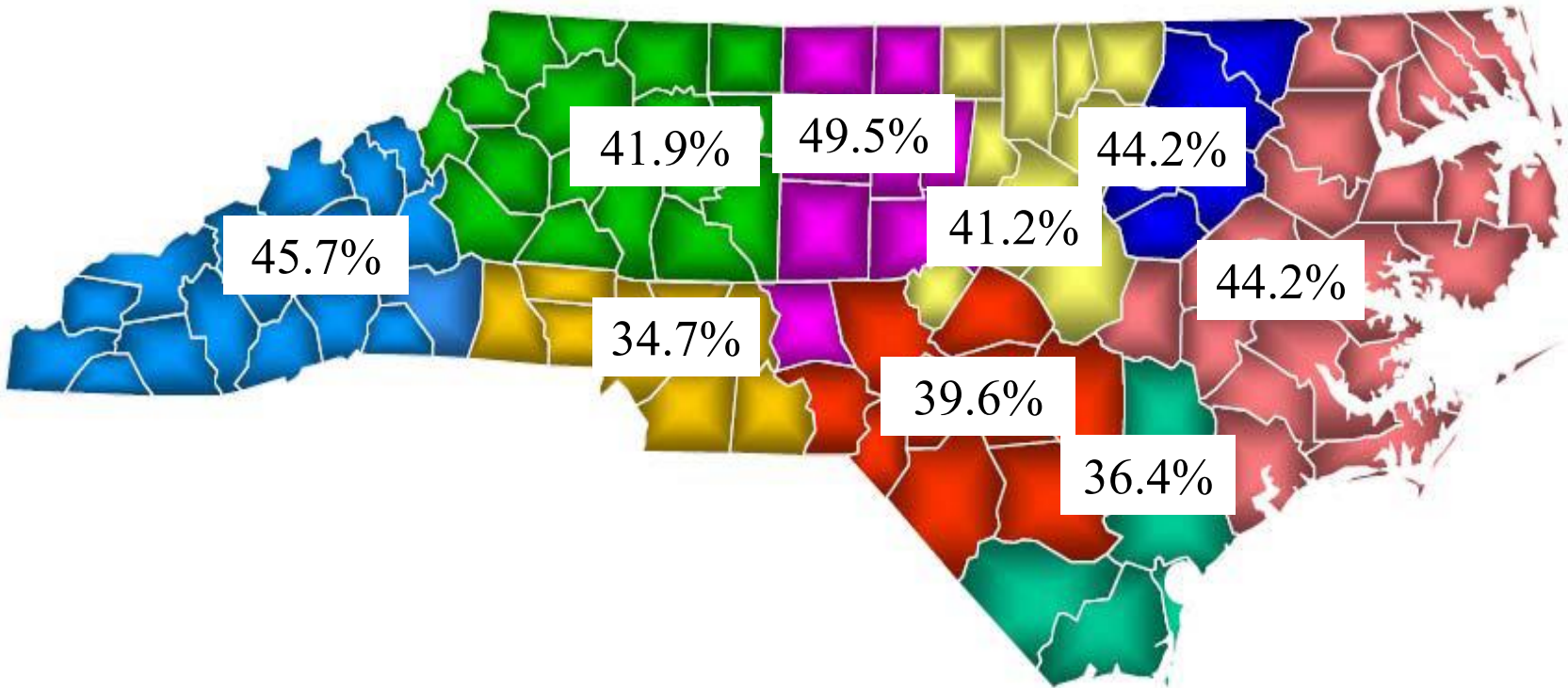


Eastern and Area L AHEC data are combined

# Flu and Pneumococcal Vaccinations

# Prevalence of Self-report of Flu Vaccination Among Adults in Past 12 Months (2018 NC BRFSS by AHEC Region)

Statewide: 41.6% of Adults Reported Getting a Flu Vaccine in Last 12 Months

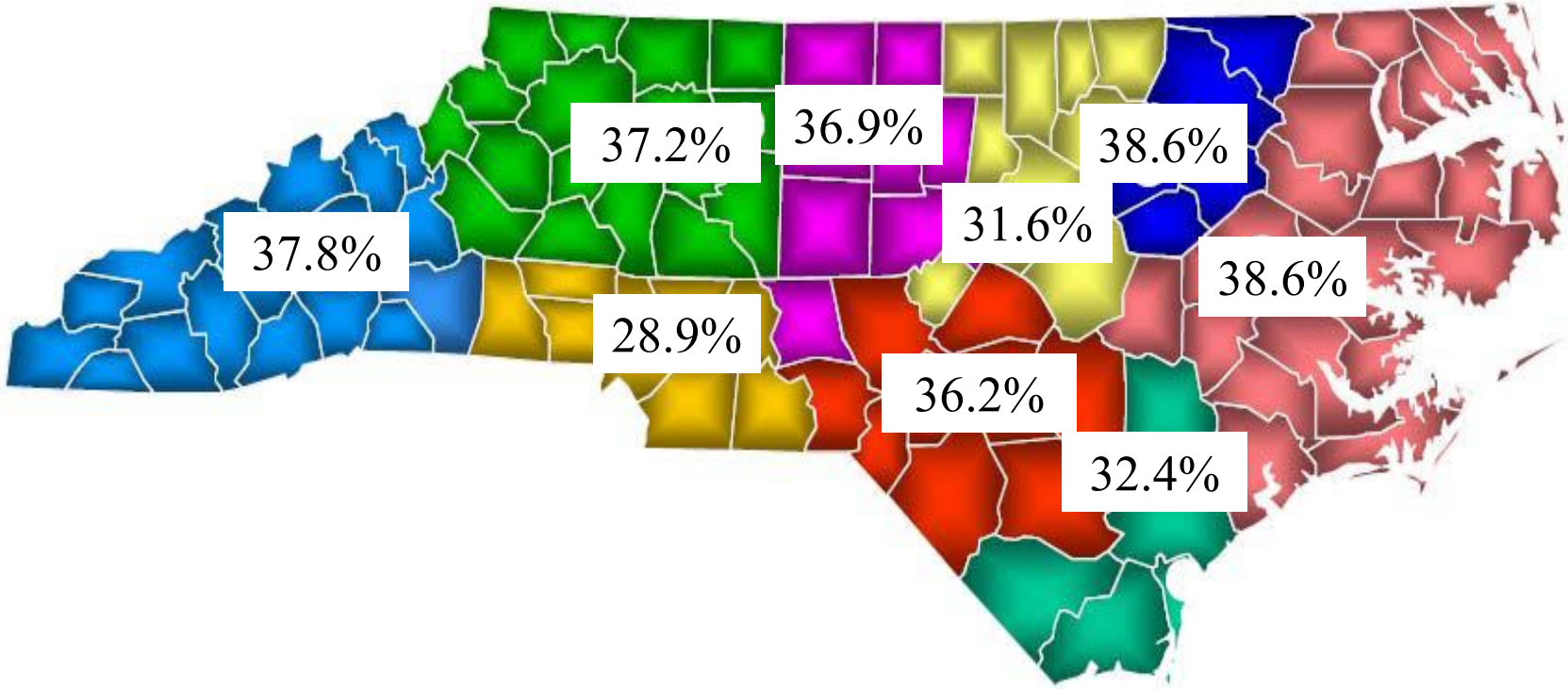


Eastern and Area L AHEC data are combined



# Prevalence of Self-report of Pneumococcal Vaccination Among Adults Ever (2018 NC BRFSS by AHEC Region)

Statewide: 34.7% of Adults Reported Ever Getting Pneumococcal Vaccination



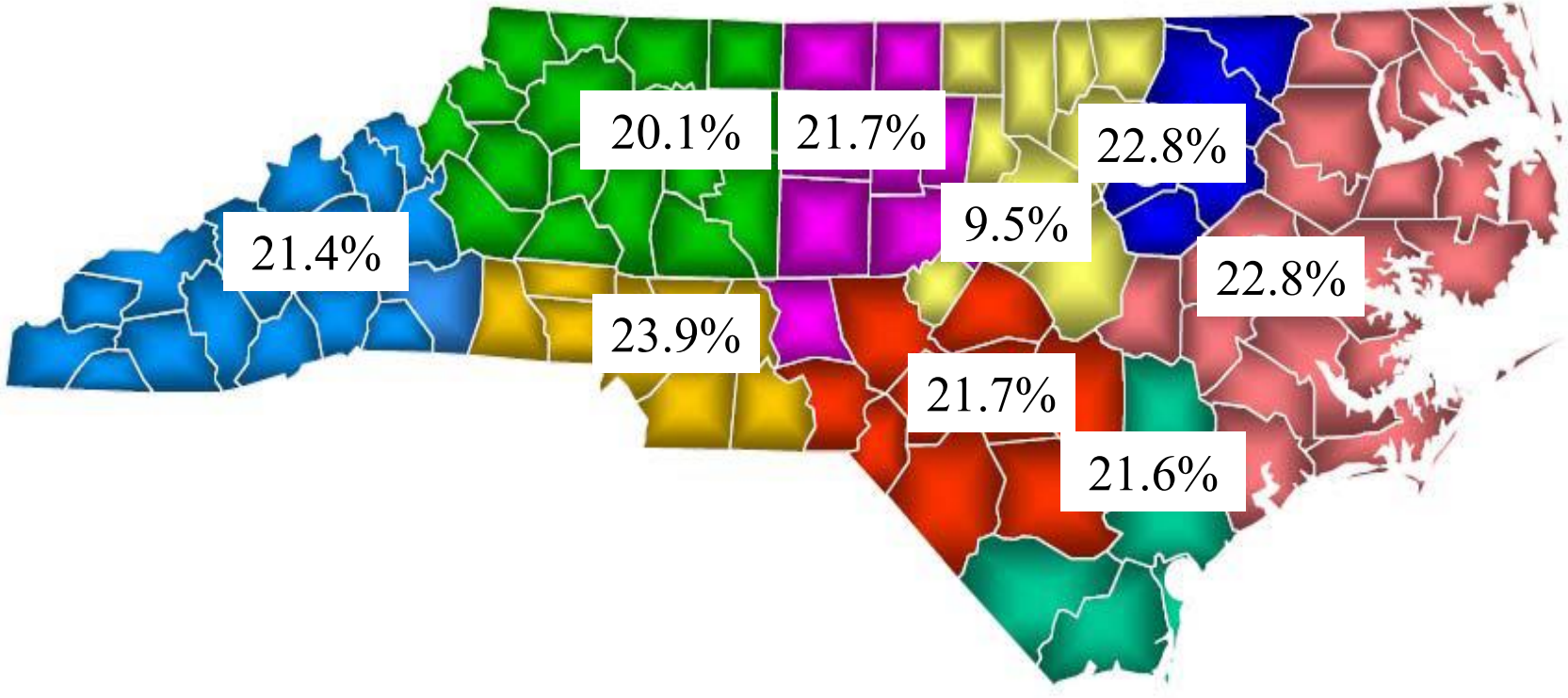
Eastern and Area L AHEC data are combined

Tobacco Smoking



# Prevalence of Self-reported Smoking in Adults For More Than 15 years (2018 NC BRFSS by AHEC Region)

Statewide: 20.0% of Adults Reported Smoking > 15 years

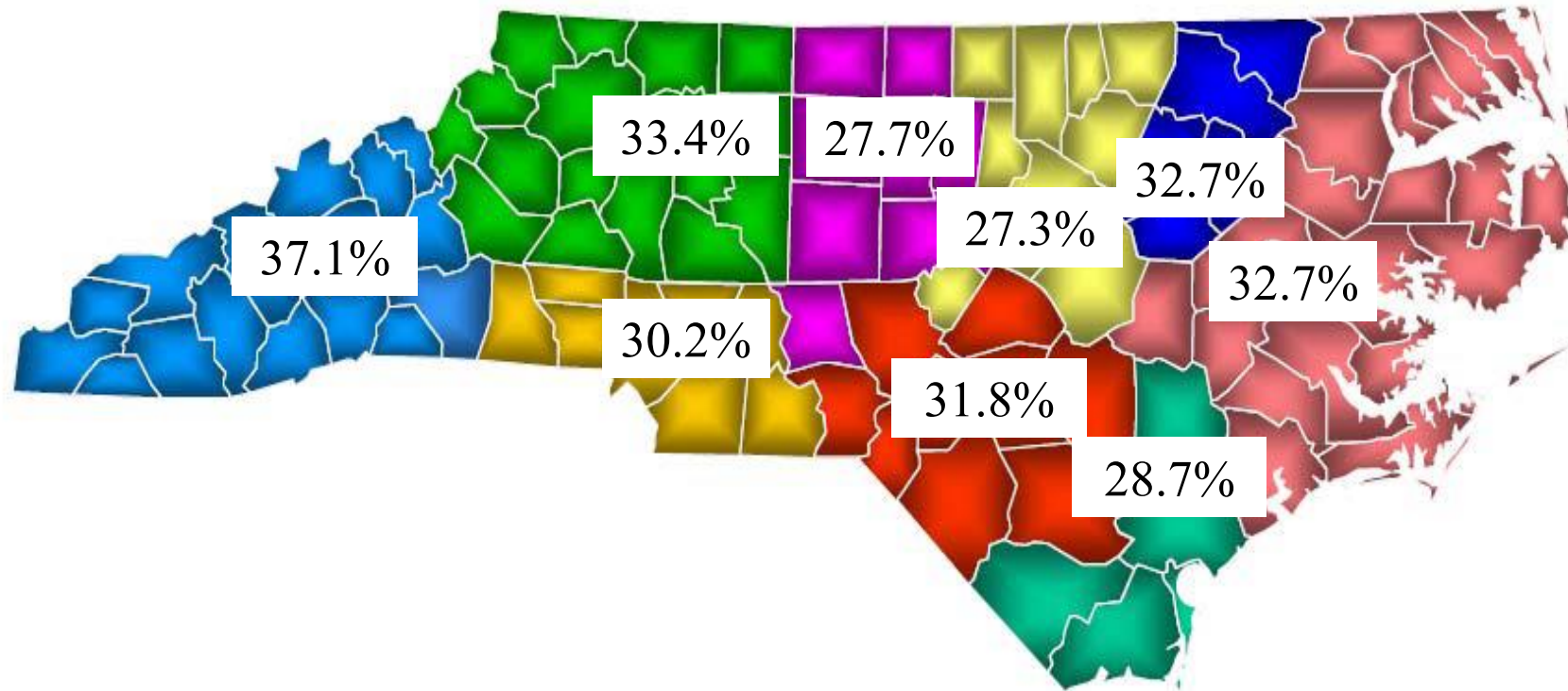


Eastern and Area L AHEC data are combined

# Performing Breathing Tests

# Prevalence of Self-reported Ever Having a Breathing Test to Diagnose Breathing Problems (2018 NC BRFSS by AHEC Region)

Statewide: 31.0% of Adults Reported Ever Having a Breathing Test



Eastern and Area L AHEC data are combined

For Questions, Contact the North Carolina  
Thoracic Society ([ncthoracicsociety@gmail.com](mailto:ncthoracicsociety@gmail.com))  
or Visit our Website ([www.ncthoracic.org](http://www.ncthoracic.org))